

IOM: K-MotorShield Motor Cover

Kinder Australia Product:	K-MotorShield Motor Cover
Product Category:	Safety & Environmental
Issue Date:	02.02.23
Revision:	4



⚠ WARNING ⚠

Always obey all applicable safety rules.
Be sure motor is not running.

Be sure all power to the conveyor has been disconnected and controls are locked out.

IOM: K-MotorShield Motor Cover

Installing the K-MotorShield Motor Cover

Installation Tools Required

- Pen or Marker

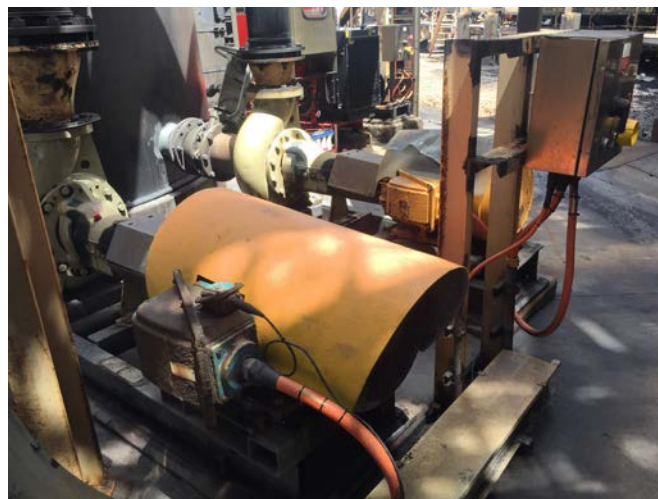
-Jigsaw or Saw

Overview:

The function of K-MotorShield Motor Cover is to keep debris, water and slurry away from motors, and at the same time improving the heat transfer efficiency of the cooling fans by increasing airflow by as much as 140%.



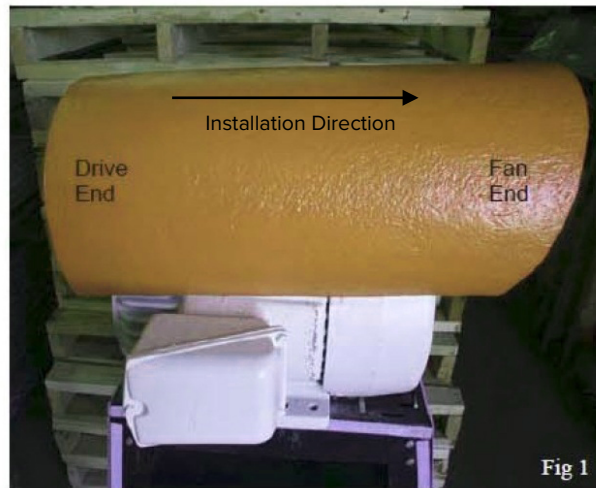
The K-MotorShield Motor Cover can be used in a wide array of applications. Not only can it be used to cover regular conveyor belt motors, but also motors for other devices such as for pumps and fans.



The above application shows the K-MotorShield Motor Cover being used on pumps to ensure they stay unaffected by the fine powder covering the site.

IOM: K-MotorShield Motor Cover

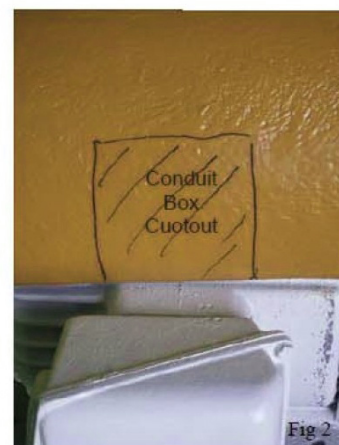
Step One: Alignment



Covers arrive without a cut-out for the conduit box or lifting lugs (if there are any). After making sure that the motor cooling fin channels and air intake are clean, install the cover by aligning the back end so that they are fully covered. Fig. 1

Step Two: Marking Cut Locations

Mark the location of the conduit box cut-out location for reference with your choice of marker as seen in Fig. 2. The cut should be only fractionally larger than the box itself.



Step Three: Cutting the Cover

Using a jigsaw, or similar type saw, cut out the locations that were marked in step 2. Cut slightly inside the marked area and slowly work your way to the edge to ensure a clean cut. See Fig. 3 for an example of a cut cover.

IOM: K-MotorShield Motor Cover

Step Four: Fitting the Cover

Stretch the sides of the cover and snap it over the motor. The angled end should extend out and over the air intake. Make any adjustments to cuts as necessary to ensure that the cover fits well. See Fig.

4 for an example of good motor coverage.



TROUBLESHOOTING GUIDE

Problem	Probable Cause	Suggested solution
Cover does not fit over motor	Cover wrong size	Double check that you have the correct cover size for your motor. Ensure the motor is labelled correctly and that the dimensions you measured are correct.
	Cover won't snap over motor	Ensure that cuts are clean and that there is no excess material interfering with the motor.
	Cover not covering motor fully	Ensure that you have lined the cover up properly and are not covering dead space that is not near the cooling fin channels or air intake.,
Motor getting dirty despite cover	Conduit box cut-out too large	Make sure you have not cut the cover excessively. Any large gaps in the cover become entry points for dust and debris.
Vibration or noise	Cover too large	Your cover may be too large and is therefore subject to the motion of the motor. Make sure you have selected the correct cover size.