

## K-Sure® Belt Support System



The **K-Sure® Belt Support System** is designed to provide a consistent and stable support for the troughed belt profile by reducing the number of rotating components. The Support System eliminates any belt edge sag and therefore increases the effectiveness of the skirting seal.

Belt sag is usually caused when there are too few idlers installed at the loading point. The K-Sure® Belt Support System corrects this by utilising the existing idler frames and load carrying centre roller. The wing rollers are then replaced by the K-Sure® Belt Support System's universal adaptor brackets and low friction polymer belt support rails.



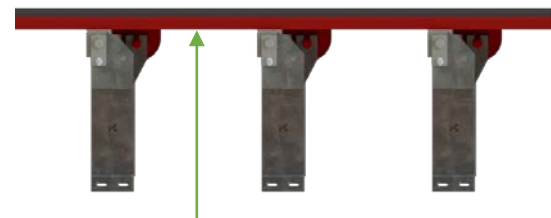
Available in standard 2m length assembly kits; other longer lengths can be modified upon request.

The System requires no pre-engineering, adjustments or special tools. The outcome is successfully controlled spillage and contained dust leakage.

For a conveyor transfer point system which requires inspection or fast access to the belt, the K-Sure® Drop Down Transfer Point belt support system is available.



**Belt sag due to lack of support**



**K-Sure® Belt Support System**

[kinder.com.au](http://kinder.com.au)

Subject to © Kinder Australia Pty Ltd

Issue: 202205

### Kinder Australia Pty Ltd

26 Canterbury Road, Braeside VIC 3195  
PO Box 1026, Braeside VIC 3195

☎ +61 3 8587 9111  
☎ +61 3 8587 9101

✉ [conveyorsolutions@kinder.com.au](mailto:conveyorsolutions@kinder.com.au)

ABN: 28 006 489 238

## K-Sure<sup>®</sup> Belt Support System

### K-Sure<sup>®</sup> Belt Support System



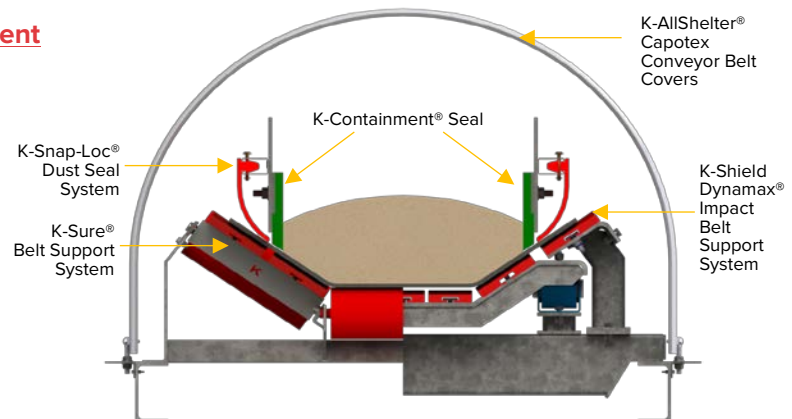
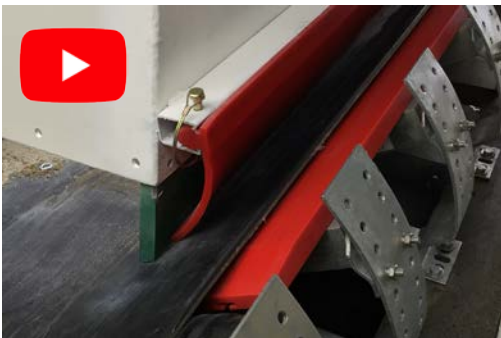
### K-Sure<sup>®</sup> Belt Support Flat Carry Application



For more information, contact Kinder.

Cross-section image of the **K-Sure<sup>®</sup> Belt Support System**, showing the new design for the adaptor brackets, used to replace the wing rollers.

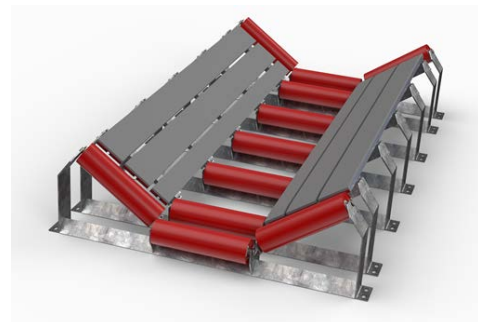
### Kinder 'Essential SNAP Seal' Dust Containment



### K-Glideshield<sup>®</sup> Sure Support Rails

Designed to provide a consistent and stable support for the troughed belt profile by reducing the number of rotating components.

The Support System eliminates any belt edge sag and therefore increases the effectiveness of the skirting seal. Slider rails are available in UHMWPE and K-Glideshield<sup>®</sup> High Speed / Capacity versions depending on the specific application.



[kinder.com.au](http://kinder.com.au)

Subject to © Kinder Australia Pty Ltd

Issue: 202205

### Kinder Australia Pty Ltd

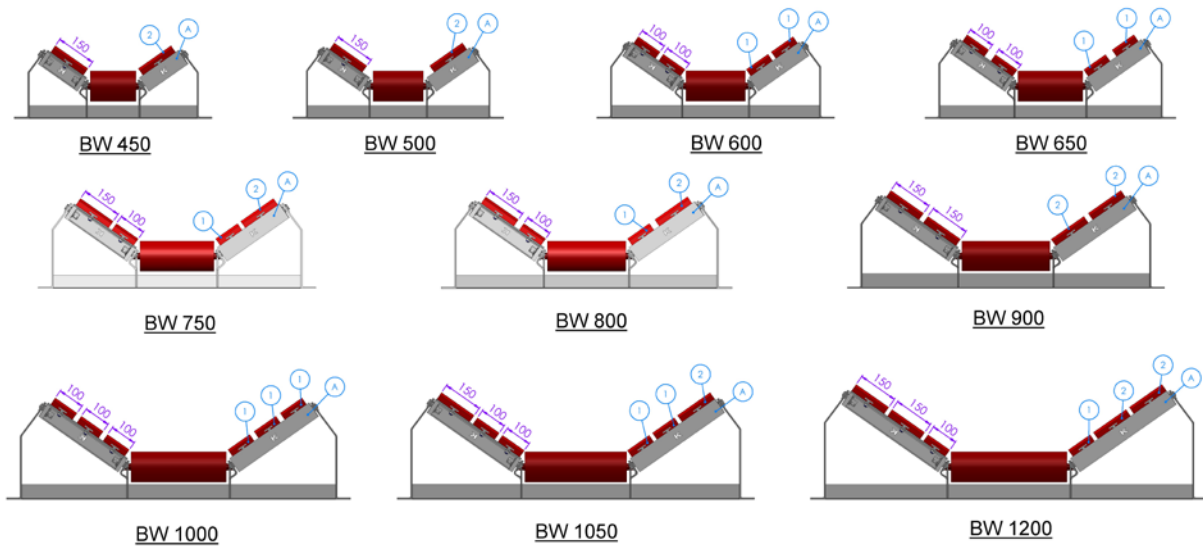
26 Canterbury Road, Braeside VIC 3195  
PO Box 1026, Braeside VIC 3195

☎ +61 3 8587 9111  
✉ +61 3 8587 9101

✉ conveyorsolutions@kinder.com.au

ABN: 28 006 489 238

# K-Sure® Belt Support System



Belt Width	Slider Rail Assembly	Adaptor Assembly: Item 'A', 10 OFF *	Slider Rail Type 1 Type 100 - Item 1 Part No. K-SUP-KS100x30	Slider Rail Type 2 Type 150 - Item 2 Part No. K-SUP-KS150x30
	Part Number	Part Number	Qty	Qty
450	K-SUP-450AS	K-ADA-2620		2
500	K-SUP-500AS	K-ADA-2621		2
600	K-SUP-600AS	K-ADA-2622	4	
650	K-SUP-650AS	K-ADA-2623	4	
750	K-SUP-750AS	K-ADA-2624	2	2
800	K-SUP-800AS	K-ADA-2625	2	2
900	K-SUP-900AS	K-ADA-2626		4
1000	K-SUP-1000AS	K-ADA-2627	6	
1050	K-SUP-1050AS	K-ADA-2628	4	2
1200	K-SUP-1200AS	K-ADA-2629	2	4

**LARGER BELT WIDTHS AVAILABLE ON REQUEST - CONTACT KINDER**

\* Includes bracket body, T-BOLT M10X25 C/W Nyloc Nut & 3/8 x 1/4 Flat Round Washer and 2-Off Retaining Plates.

[kinder.com.au](http://kinder.com.au)

Subject to © Kinder Australia Pty Ltd

Issue: 202205

## Kinder Australia Pty Ltd

26 Canterbury Road, Braeside VIC 3195  
PO Box 1026, Braeside VIC 3195

☎ +61 3 8587 9111  
☎ +61 3 8587 9101

✉ [conveyorsolutions@kinder.com.au](mailto:conveyorsolutions@kinder.com.au)

ABN: 28 006 489 238