

Eraser™ SHD Primary Belt Cleaning System

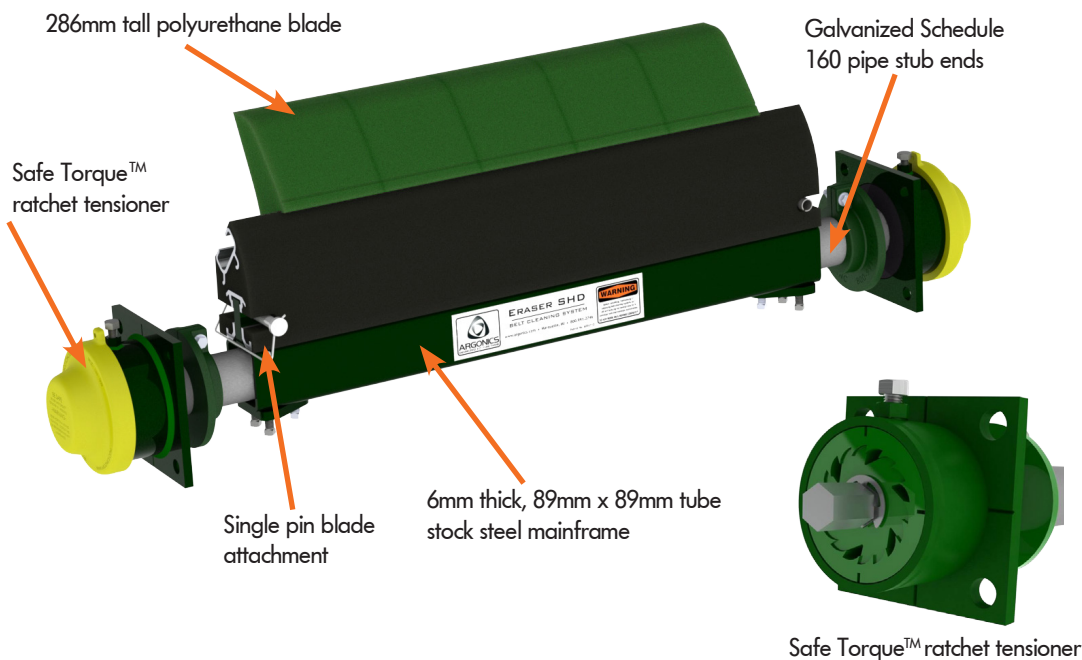
Super Heavy Duty Applications

The **Eraser™ SHD** system comes with a replaceable tip blade. This blade allows for only the tip to be replaced when it becomes worn, rather than the entire blade. And as it comes in 152mm lengths, in cases of uneven wear, you can replace just the worn section. The **Eraser™ SHD** system is a rugged mine duty system, designed for extremely abusive environments with a 286 mm polyurethane blade.

This system uses the Super Eraser's 6 mm thick, 89 mm x 89 mm tube stock steel mainframe and corrosion-resistant, galvanised Schedule 160 pipe stub ends for long lasting durability.

Key Benefits

- Replaceable blade tip means quick blade change out with less downtime.
- For use on conveyors with large head pulleys, big loads, harsh conditions and/or fast belt speeds.
- Extremely effective cleaning performance with a 298 mm Raptor blade and rugged mainframe.
- The Perma-Torque™ internal central tensioner is adjustable from 30 to 135 ft-lb (40 to 183 Nm) resulting in uniform cleaning pressure to the conveyor belt.
- Compact mounting footprint only protrudes 140 mm from mounting structure.



BLADES

- N62 Ether**
Normally used for extremely wet applications, sands & fines
- R80 Ether**
Good for wet applications with any pH level
- G83 Ester**
Our standard, high abrasion-resistant all-purpose cleaning blade
- U90**
Good for dry applications with any pH level
- B93 Ester**
Our high temperature cleaning blade, up to 250°F (121°C)
- FO83 Ester**
MSHA approved Front Line® flame-retardant cleaning blade
- RU83 Ester**
Flame retardant, anti-static cleaning blade

Issue 201807

Page 1



www.kinder.com.au

Kinder Australia Pty Ltd

P | +61 3 8587 9111 F | +61 3 8587 9101 E | sales@kinder.com.au

26 Canterbury Rd, Braeside VIC 3195 (PO Box 1026, Braeside VIC 3195)

Subject to © Kinder Australia Pty Ltd

abn 28 006 489 238



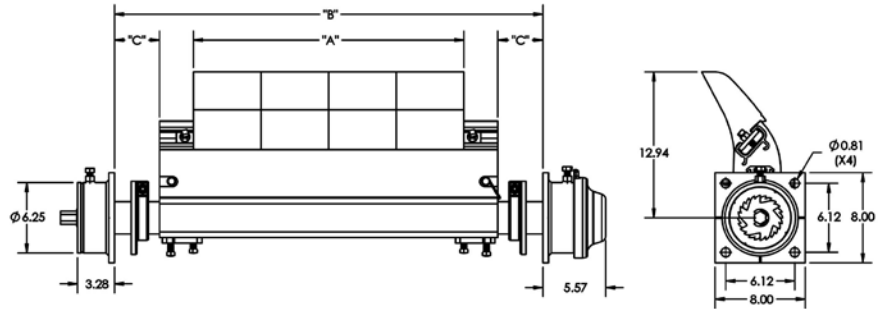
Eraser™ SHD Primary Belt Cleaning System

SPECIFICATIONS

Belt speeds up to 2.5m/s for G83 blades.
For greater belt speed up to 7m/s,
contact Kinder Australia.

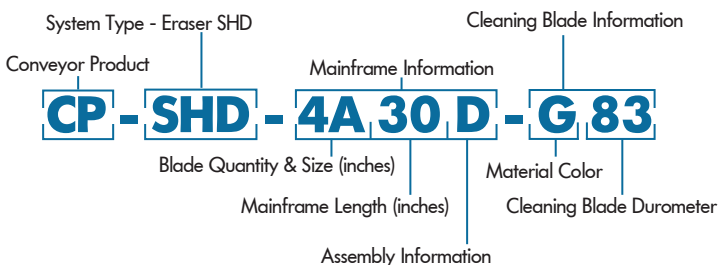
Pulley Diameter (PD)

Minimum: 610mm
Maximum: 1524mm

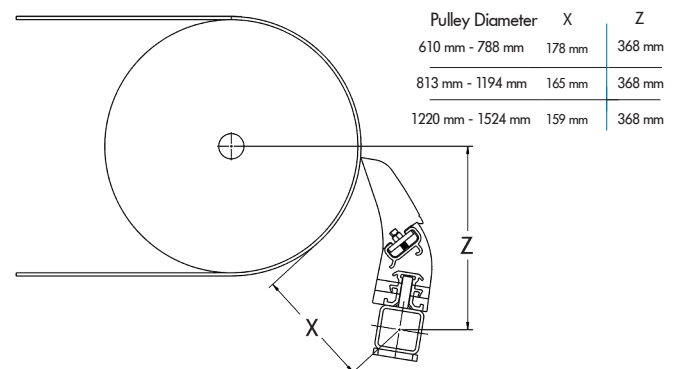


Part Number	A		Min B		Max B		Min C		Max C		Weight (kgs)
	inches	mm	inches	mm	inches	mm	inches	mm			
CP-SHD-4A30D	24.00	610	50.00	1270	58.00	1474	10.00	254	14.00	356	62
CP-SHD-5A36D	30.00	762	50.00	1270	64.00	1626	7.00	178	14.00	356	67
CP-SHD-6A42D	36.00	915	50.00	1270	70.00	1778	1.00	102	14.00	356	73
CP-SHD-7A48D	42.00	1067	50.00	1270	76.00	1931	0.25	7	14.00	356	78
CP-SHD-8A54D	48.00	1220	54.50	1385	82.00	2083	0.25	7	14.00	356	83
CP-SHD-9A60D	54.00	1372	60.50	1537	88.00	2236	0.25	7	14.00	356	89
CP-SHD-11A72D	66.00	1677	72.50	1842	100.00	2540	0.25	7	14.00	356	100
CP-SHD-13A242D	78.00	1982	84.50	2147	108.00	2744	0.25	7	12.00	305	110
CP-SHD-15A248D	90.00	2286	96.50	2451	120.00	3048	0.25	7	12.00	305	121
CP-SHD-17A254D	102.00	2591	108.50	2756	132.00	3353	0.25	7	12.00	305	131
CP-SHD-19A260D	114.00	2896	120.50	3061	144.00	3658	0.25	7	12.00	305	105

NOMENCLATURE



MOUNTING INFORMATION



Issue 201807

Page 2



www.kinder.com.au

Kinder Australia Pty Ltd

P | +61 3 8587 9111 F | +61 3 8587 9101 E | sales@kinder.com.au

26 Canterbury Rd, Braeside VIC 3195 (PO Box 1026, Braeside VIC 3195)

Subject to © Kinder Australia Pty Ltd

abn 28 006 489 238

