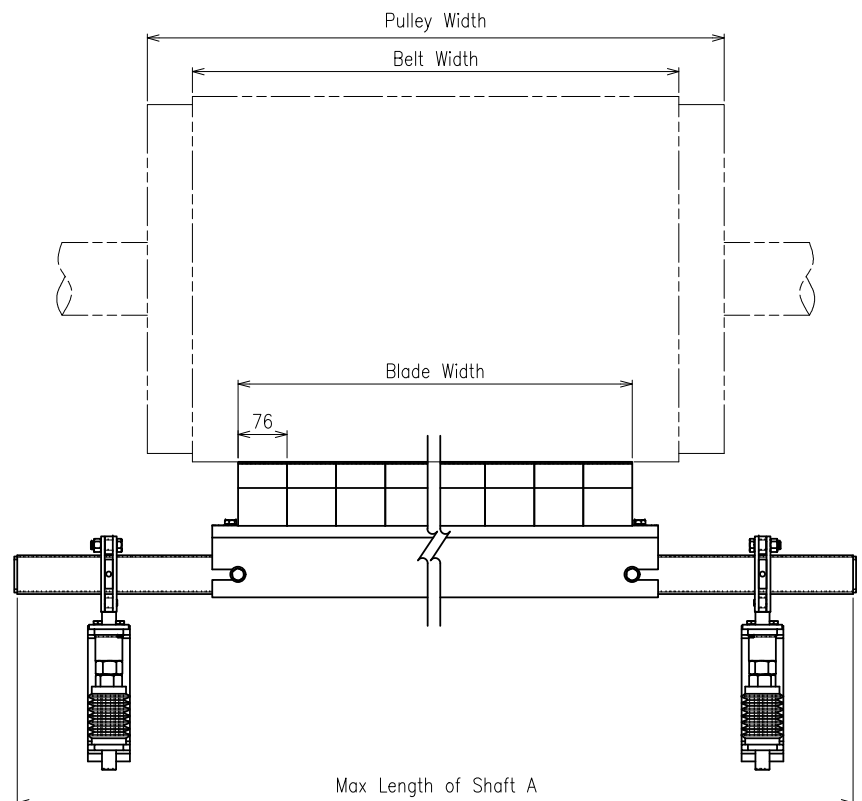
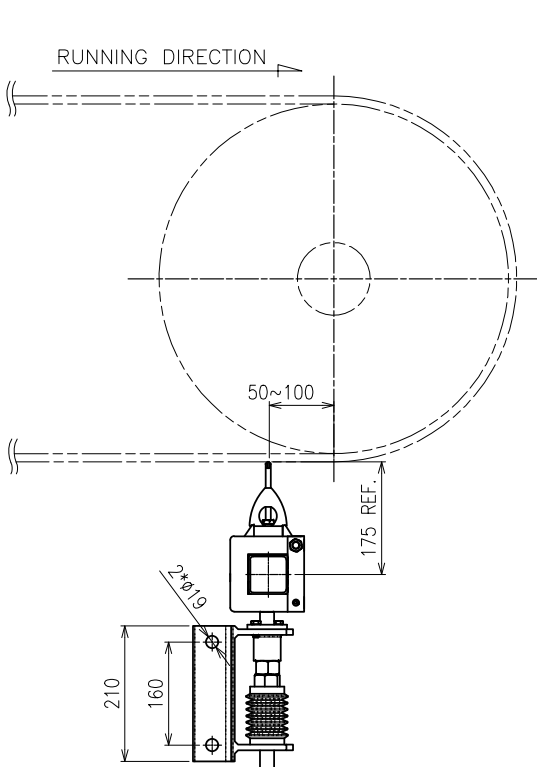
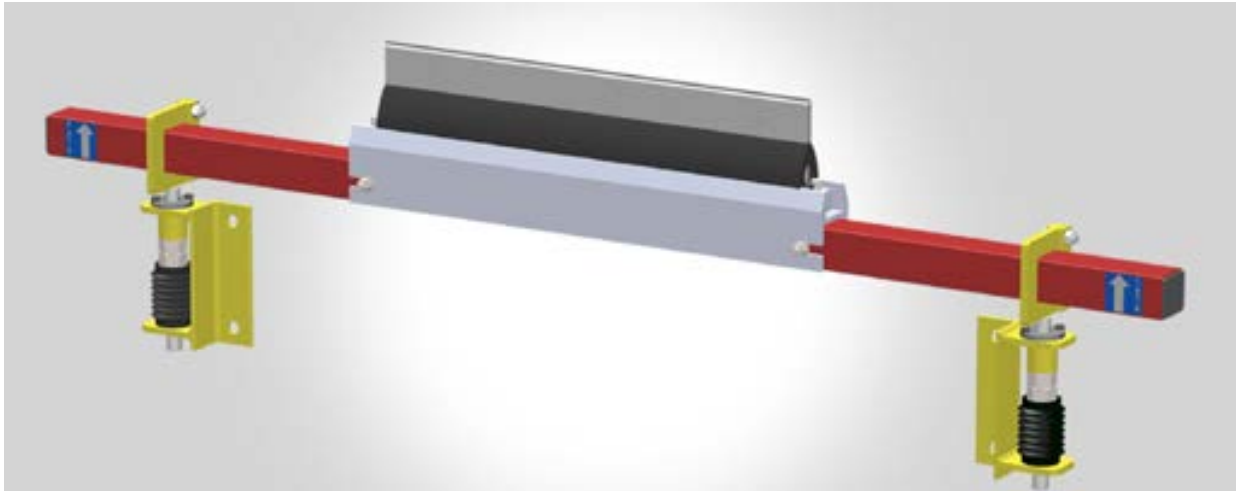


Installation Instructions: K-Calibre® Reversing Secondary Belt Cleaner

Kinder Australia Product:
Product Category:
Issue Date:
Revision:

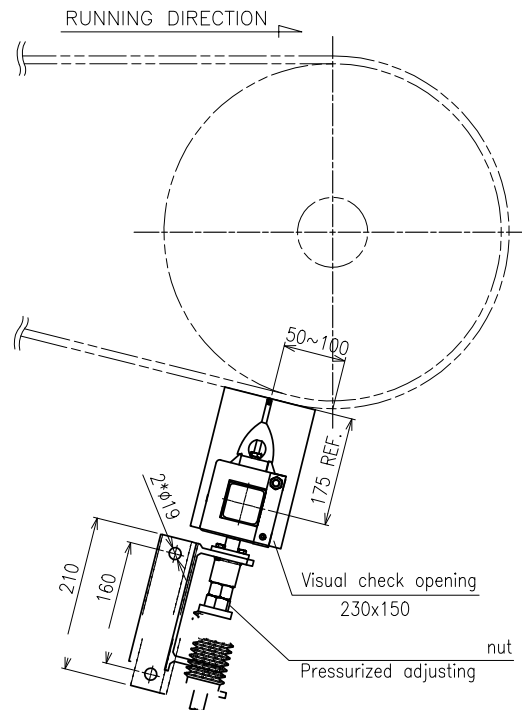
K-Calibre® Reversing Secondary Belt Cleaner
Belt Cleaning System Products
27.7.22
0



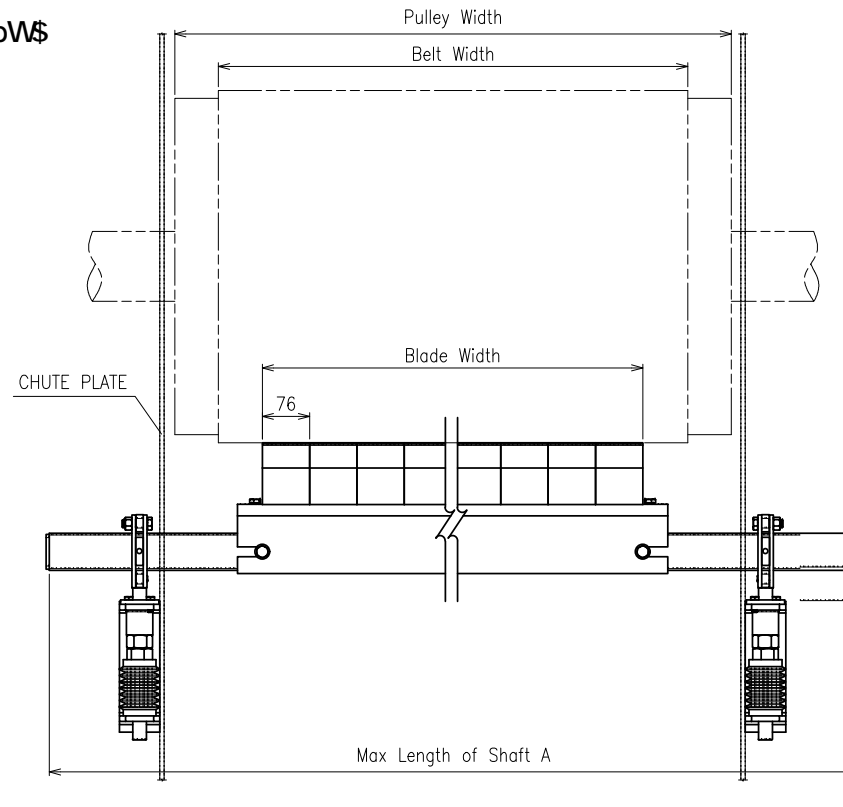
Installation Instructions: K-Calibre® Reversing Secondary Belt Cleaner

efS^Sf[a` EfVbe

FZd/WV[efS^Sf[a` fkbW\$ SdVShS[ST^W^dfZW\$` V dai U^S` W^B^SeW_ S] WegdVfZWsbdbd[SfWfkbW[SVhS` U^b^SeWdW^fa fZW[SYdS_ ^dfZW^fZdWfkbW^f
\$Z 3XVdUa` Xd_ [Y fZWVW[dW fkbW` aUSfWfZWUa` fSur[Y ba[fTWf W^ TWf S` V bg^V^ZfZW [efS^fZWf[b [fZW[efS^Sf[a` eUabWg` V^d V^fZ fZ[e ba[fTk Xd_ [Y
/ ^p#` ^fiaX[UgVWV S` Y^Mi [fZ fZWbWbW V[Ug^d^ WaXTWf XSUM^b^SeWdW^fa fZWdW^dW U^WdSi [Y aXT^SVW[efS^Sf[a` baelf[a` fZ
%Z Gba` fZW[efS^Sf[a` f bgf fZWf[b e[YZf^k La` fSur fZW^TWf XSUM^6gd Y fZWfWef dg fgd fZWSV^gef Y` gfTk U^aU] i [eW[dW^fa bgeZ[Y fZWefgV _ah[Y gbi SdV Xad
'__ Se bWfZWdSi [Yz
&Z Gba` V^SUZ UadW^fa` aXfZWSV^gef_ W fbdV^egdV^Sbbdj Z' __ aXSV^gef_ W fha`g_ W^ib^SeWabW^fWSe eZai` Tk EfVb %Z
' Z I ZW fZW^T^SVW V^d Y dV^SUZV^fZWdW^SUM_ W fef WSe eZai` [fZWdSi [Y f b^SeWdW^SUM i [fZ S` W` a` V^



FkbW\$



Kinder Australia Pty Ltd

Subject to © Kinder Australia Pty Ltd
ABN: 28 006 489 238

26 Canterbury Rd, Braeside VIC 3195
PO Box 1026, Braeside VIC 3195

+61 3 8587 9111
+61 3 8587 9101

kinder.com.au

conveyorsolutions@kinder.com.au

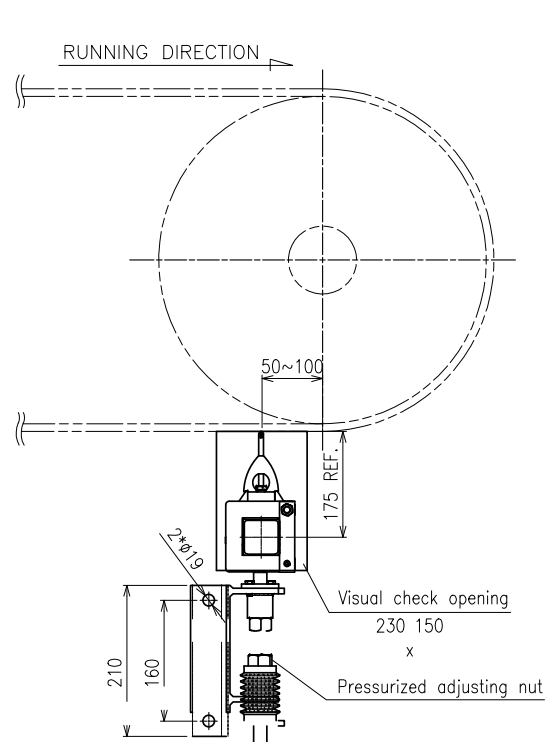
eegWKDOC00140

BSYW3

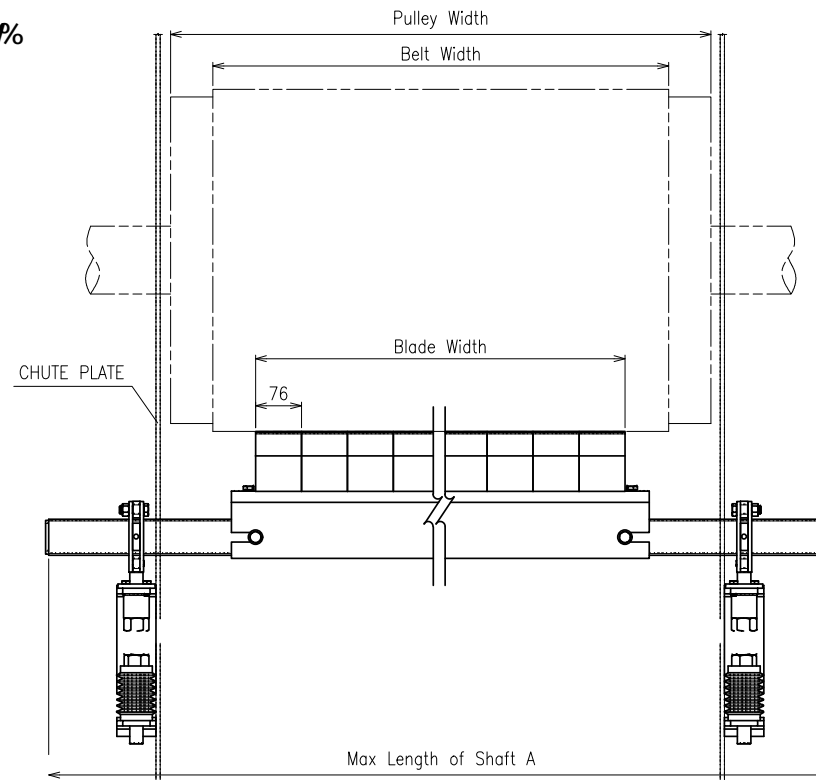
Installation Instructions: K-Calibre® Reversing Secondary Belt Cleaner

efS^Sf[a` EfVbe

FZd/WV[efS^Sf[a` fkbW SdWShS[ST WadFZW\$` V dai UWS` WzB^WSeW_ S] WegdWfZWsbdbd[SfWfkbW[SVhS` UWb^WSeWd/Wdifa fZWV[SYdS_ XadFZWfZWd/WfkbWefz
\$Z 3XVdUa: Xd_ [Y fZWVWd/W fkbW` aUSfWfZWUa` fSUR[Y ba[fTWf WV TWf S` V bg^WkzFZW [efS^fZWf[b [fZW[efS^Sf[a` eUabWg` VVd Wsfz fZ[e ba[fTk Xad_ [Y
/ »p# »fiaX[UgVWV S` Y^Mi [fZ fZWbWbW V[UgSd^ WaXTWf XSWVb^WSeWd/Wdifa fZW d/Wd/W UWVdSi [Y aXT^SVW[efS^Sf[a` baelf[a` fZ
%Z Gba` fZW[efS^Sf[a` fbgf fZWf[b e^YZfk Ua` fSUR fZWWTWf XSWV6gd` Y fZWVWefdg` fgd fZWSV^gef` Y` gfTk UaUj i [eWV[dWf[a` bgeZ[Y fZWefgV_ ah[Y gbi Sd/ Xad
' _ _ Se bWd fZWVdSi [Yz
&z Gba` WsUZ UadWf[a` aXfZWSV^gef_ W fbdWegdWsbdbaj z' _ _ aXSV^gef_ W fha`g_ Wf b^WSeWabWdSWSe eZai` Tk EfVb %z
' z I ZW fZWV SVVW Vsd` Y dWSUZVefZWdWb^SUM_ W feU WSe eZai` [fZWVdSi [Y b^WSeWdWb^SUM i [fZ S` W a` Wz



FkbW%



Kinder Australia Pty Ltd

Subject to © Kinder Australia Pty Ltd
ABN: 28 006 489 238

26 Canterbury Rd, Braeside VIC 3195
PO Box 1026, Braeside VIC 3195
☎ +61 3 8587 9111
✉ +61 3 8587 9101

kinder.com.au

✉ conveyorsolutions@kinder.com.au

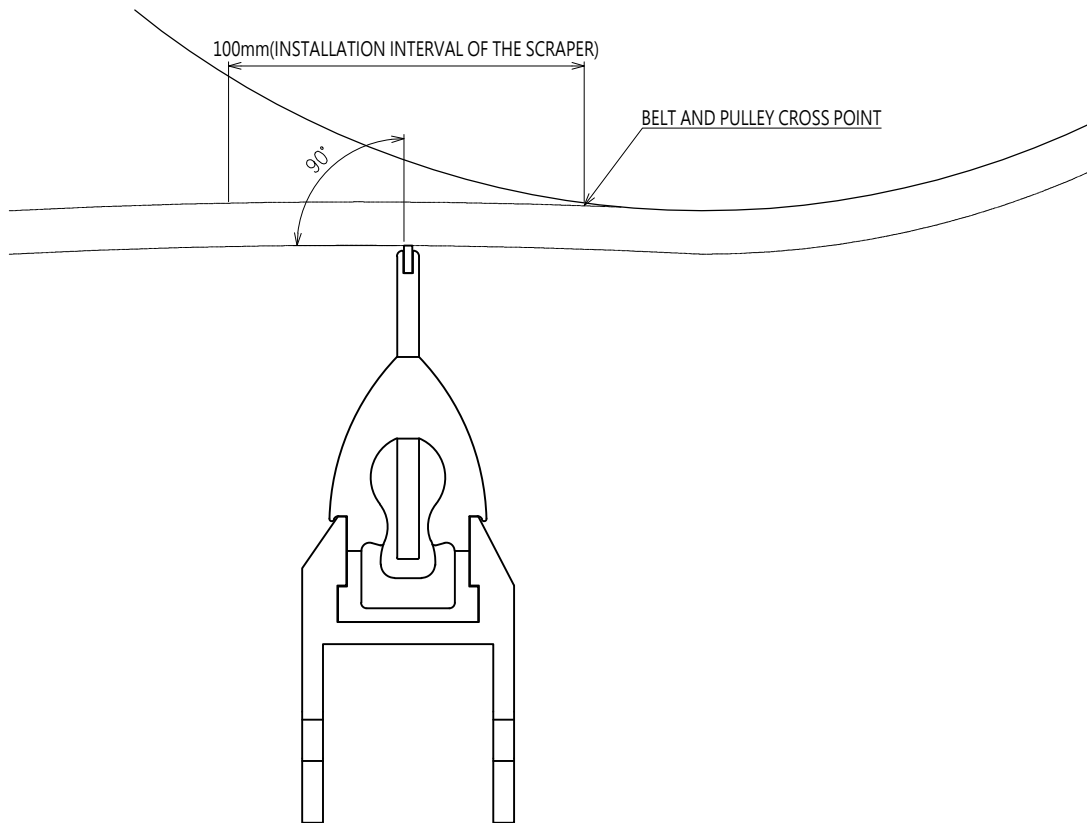
eeW KDOC00140

BSYW4

Installation Instructions: K-Calibre® Reversing Secondary Belt Cleaner

Installation Steps

Step 2: Reference Drawing Of Blade Installation Position



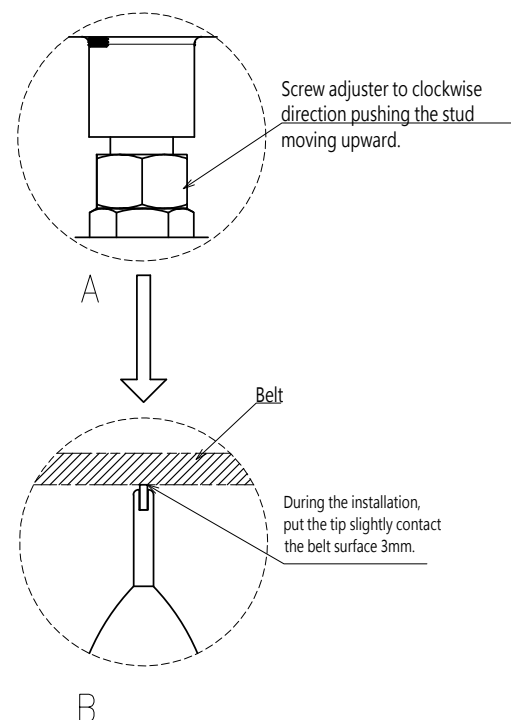
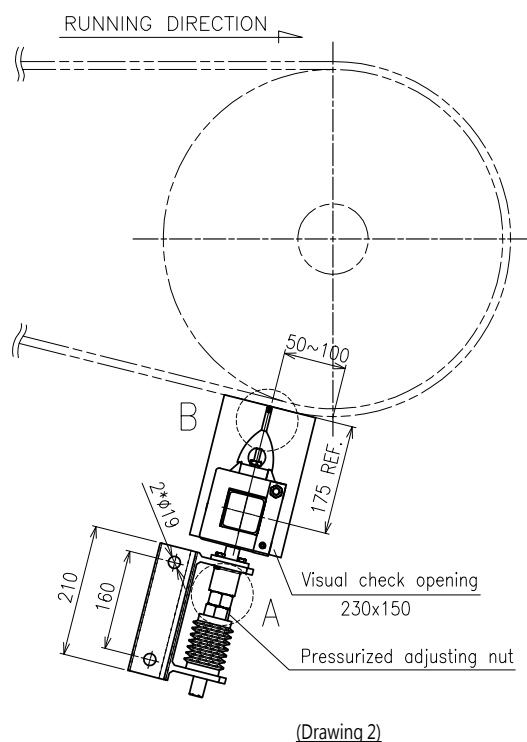
Installation Instructions: K-Calibre® Reversing Secondary Belt Cleaner

Installation Steps

Step 3: During the installation, put the tip slightly contact the belt surface. And during the test run, draw out the base bolt and turn the screw adjuster to clockwise direction pushing the stud moving upward (please refer to the reference drawing 2 of blade installation position).

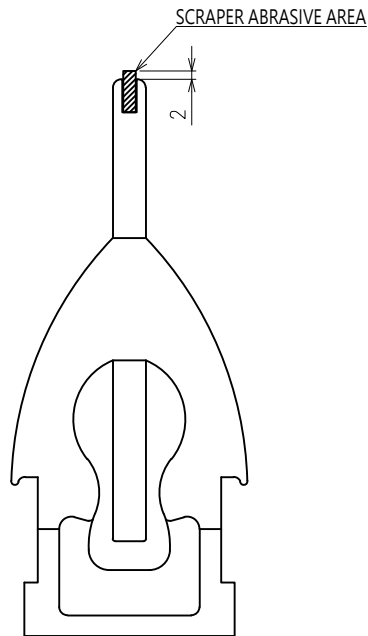
Step 4: Correction of the adjustment pressure: (Adjust approximately 3mm upward from the slight contact of belt and tip), please operate as shown by Step 3.

Please refer to the reference drawing 2 of blade installation position.



Installation Instructions: K-Calibre® Reversing Secondary Belt Cleaner

Maintenance



(Drawing 3)

SCRAPER ABRASIVE LIMIT
please refer to the reference drawing 3