

K-Trowelable Ceramic

K-Trowelable Ceramic is formulated to protect against severe sliding abrasion. The product consists of small ceramic beads dispersed in an epoxy compound.

K-Trowelable Ceramic is a good indicator of a material's ability to withstand mechanical wear and abrasion. Ceramics composed of aluminium oxide pressed and fired to achieve a dense ceramic sphere have a hardness of 9 (nine) on the MOHS scale (Diamond = 10).

K-Trowelable Ceramic will not sag during application and can be used to protect:

- Chutes
- Pipe Elbows
- Pumps
- Valves
- Cyclones
- Centrifuges
- Screw Conveyors

Application

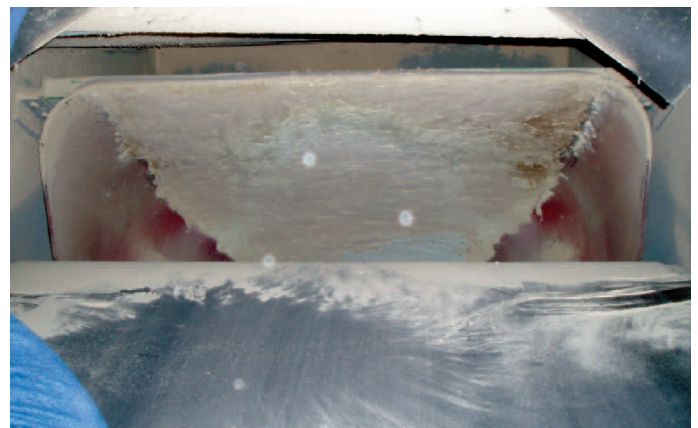
Roughen the application surface by sandblasting, grinding or wire-brushing. Clean surface with a non-petroleum based cleaner and allow to dry. Add the contents of part "A" to part "B" and mix until homogeneous. Apply the mixed ceramic compound to the surface and use trowel to achieve desired contour. If a very smooth surface is required, cover the surface with a polyethylene sheet and work through the plastic to obtain a fine finish. Allow to cure with the plastic in place.

Safety data sheets are available on request.

Specification

Kit Size	4 x 2kg (8kgs)
Coverage	1 Sq Metre @ 4mm Thick
Shelf Life	12 Months
Working Time	30 Mins @ 25 deg C
Cure Time	24 Hours @ 25 deg C

Part Number	CER-MEGA-T
-------------	------------



<https://kinder.com.au>

Subject to © Kinder Australia Pty Ltd
Issue: 202102

Kinder Australia Pty Ltd

26 Canterbury Road, Braeside VIC 3195
PO Box 1026, Braeside VIC 3195

☎ +61 3 8587 9111
☎ +61 3 8587 9101

✉ conveyorsolutions@kinder.com.au
ABN: 28 006 489 238