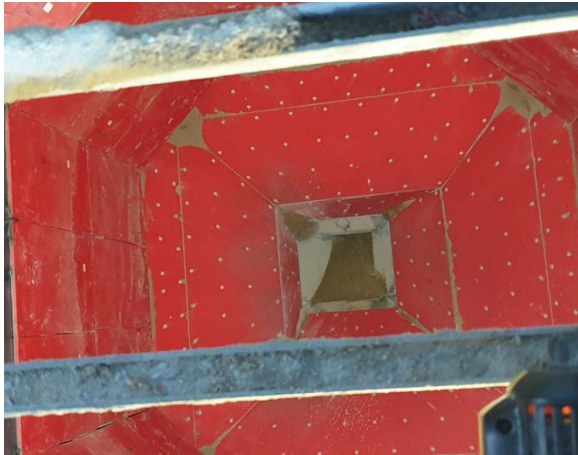


K-Slide® UHMWPE Low Friction Liner and Fastener



K-Slide® UHMWPE is a low friction lining material with good abrasion resistance and excellent corrosion resistance.

Reducing wall friction is the key to solving many common materials flow issues, such as bridging, rat-holing and caking. K-Slide® UHMWPE Low Friction Liner may improve flow in poorly optimised bin/chute designs or applications with varying moisture content.

K-Slide® UHMWPE is available in a range of grades, thickness and sheet sizes to cover many applications with anti-static and U.V. stabilised options also available.

K-Slide® can be supplied in stock sheet sizes or cut to size using precision CNC machining with counterbored or countersunk holes if required.

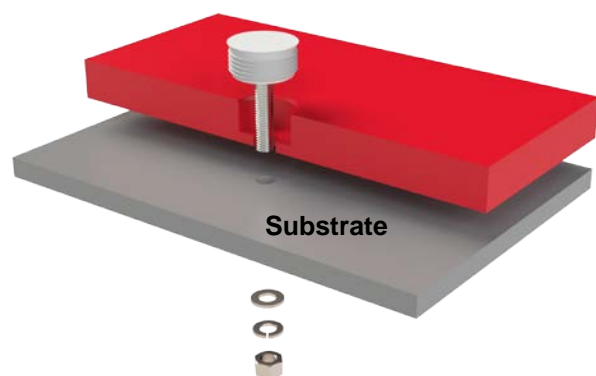
Precision cut liners ensures easy change out as new replacement liners be a direct replacement utilising existing holes/studs in the steel work.

Applications that involve high impact energy or that require extreme abrasion resistance should consider **K-Floshield High Polished Chrome Liner**.

Key Features:

- Low friction surface for improved flow characteristics.
- Anti-static and U.V. stabilised options available.
- CNC machining available.
- Easy installation with K-Slide® Cap Head Bolts.
- Zinc plated or stainless-steel fasteners for corrosion resistance.

K-Slide® Fasteners



For the K-Slide® Fastener application to be effective, it is a requirement that the Counterbore together with the through-hole be correctly sized.

K-Slide® UHMWPE Low Friction Liner and Fastener

Description	Molecular Weight (g/mol)	Colour	UV Stabilised	Static Reduced	Sheet Thickness (mm)	Sheet Size (mm)
7000 Series	7000000	Red	Yes	No	6 - 100	2440 x 1220 3000 x 1220
9000 Series	9000000	Blue	Yes	No	6 - 100	2440 x 1220 3000 x 1220
Anti-Static (<300MΩ through & surface resistance)	7000000	Black	Yes	Yes	6 - 100	2440 x 1220 3000 x 1220

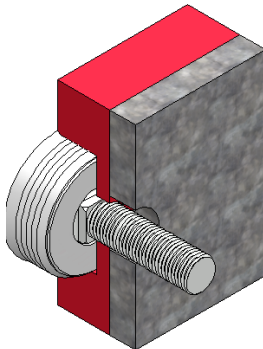
K-Slide® UHMWPE Fasteners

Fastening of K-Slide® to a steel bin, chute or hopper can be achieved by using Kinder's K-Slide® Cap Head Bolts.

The bolt head is a firm fit into a counterbored hole in the liner. When fully assembled the head finishes flush with the lining surface reducing areas where material can build up.

Refer to Kinder installation guide for recommendations regarding bolting pattern.

Right:
Image shows standard option, **K-Slide® Cap Head Bolts** is used.



Left:
Image shows an alternative method of fastening K-Slide® sheets when welding is the preferred method.

Welded stud, proprietary disc nut & UHMWPE cap

K-Slide® Counterbore Tool

Counterbore Diameter (mm)	Max. Sheet Thickness (mm)	Notes	Kinder Part Number
20	25	Suits M6 K-Slide® Coated Cap Bolts with Ø20 Head	K-FAW-KCB-20-20
30	30	Suits M8, M10 & M12 K-Slide® Coated Cap Bolts with Ø30 Head	K-FAW-KCB-30-25

All K-Slide® Fasteners are supplied with flat washer, spring washer and nut. Stainless steel available as an option. Fastener supplied with zinc plated finish. K-Slide® coated bolts available in natural (white) or black.



Kinder provided counterbore tools and coated bolts are designed to result in consistent counterboring with optimal head setting.

Dimensions for non-standard bolts can be requested from Kinder.