

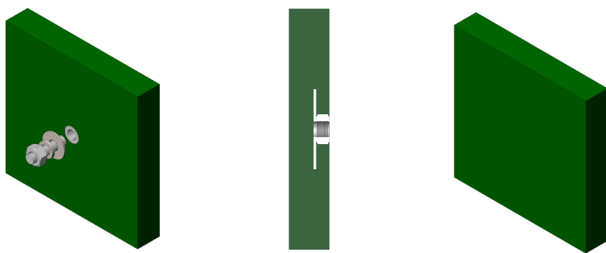
K-Redi-Liner® Polyurethane

K-Redi-Liner® Polyurethane modular lining system is a bolt in system that can be arranged into any wear pattern. The application is suitable for conveyor transfer points, high wear chutes, screen discharge and feed liners. Solid Kryptane® polyurethane will provide high wear protection.

K-Redi-Liner® Polyurethane modules are available in a variety of durometers and formulas to suit specific applications.

- Bolt-in 305mm x 305mm panels can be arranged into any wear pattern that is required.
- Solid polyurethane panels are available in thicknesses of 25mm, 38mm, 50mm and 63mm.
- Fastening stud sizes of ½ and ¾ inches available.
- Replace only what's needed instead of replacing the entire liner.
- Lightweight compared to steel.

*Redi-Liner™ is a trademark of Argonics, Inc.
Kryptane® is a registered trademark of Argonics, Inc.*



Studs, nuts and washers supplied with liners.



<https://kinder.com.au>

Subject to © Kinder Australia Pty Ltd
Issue: 202102

Kinder Australia Pty Ltd

26 Canterbury Road, Braeside VIC 3195
PO Box 1026, Braeside VIC 3195

☎ +61 3 8587 9111
☎ +61 3 8587 9101

✉ conveyorsolutions@kinder.com.au
ABN: 28 006 489 238

K-Redi-Liner® Polyurethane

K-Superline® Yellow - 59 DURO SHORE

Highly elastic. Very high impact resistance. Broken material up to 50mm lump size. Impact angle between 60° to 90°

K-Superline® Red - 80 DURO SHORE A

Resists sliding and/or impact abrasion. Fine products up to 5mm size, wet & dry. Impact angle between flat to 30°

K-Superline® Green - 83 DURO SHORE

High abrasion resistance to harsh sliding, cutting & impact. Rough material up to 50mm lump size. Impact angle between 30° to 60°

K-Superline® Orange - 83 DURO SHORE

All properties as per K-Superline green, with a flame retarding additive (ISO 340)

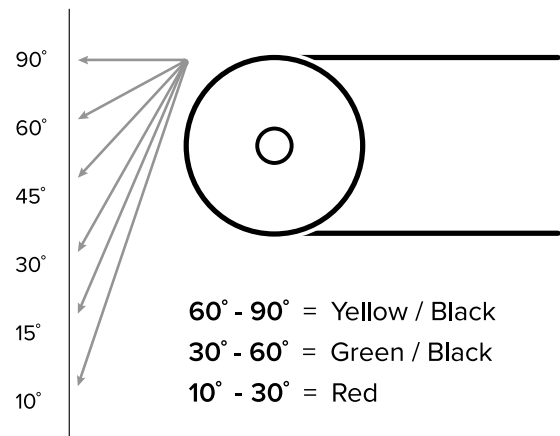
K-Superline Blue - 83 DURO SHORE

As above. Fire Resistant Anti-Static (FRAS)

K-Superline® Black - 93 DURO SHORE A

Strong abrasion resistance to sliding, grooving & impact. Heavy product up to 125mm lump size. Impact angle between 60° to 90°

Impact angle



<https://kinder.com.au>

Subject to © Kinder Australia Pty Ltd
Issue: 202102

Kinder Australia Pty Ltd

26 Canterbury Road, Braeside VIC 3195
PO Box 1026, Braeside VIC 3195

☎ +61 3 8587 9111
☎ +61 3 8587 9101

✉ conveyorsolutions@kinder.com.au
ABN: 28 006 489 238