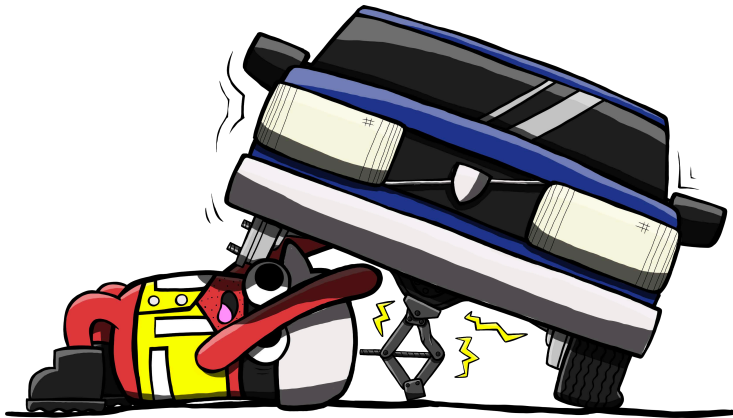


Operations Manual: K-Belt Jack

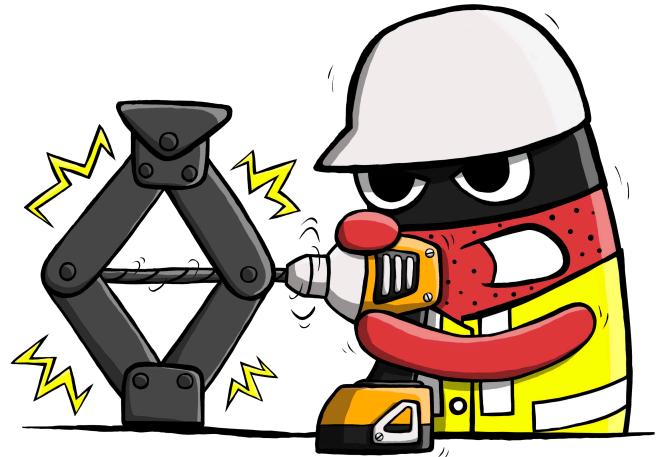
Kinder Australia Product:	K-Belt Jack
Product Category:	Belting & Repair
Document Number:	KDOC00128
Issue Date:	07.11.2022
Revision:	1



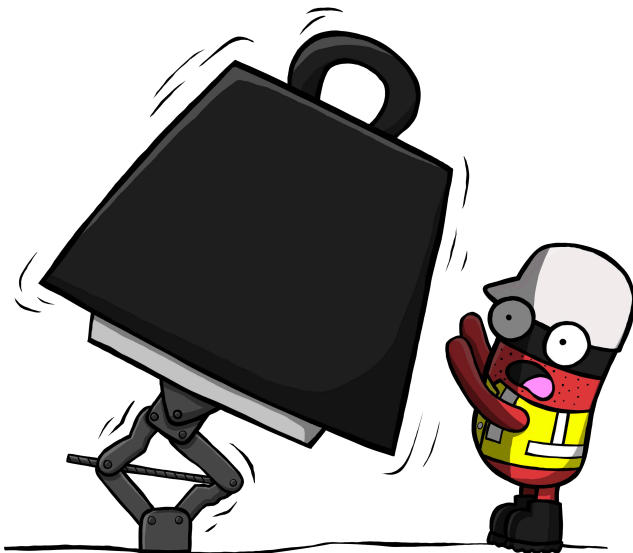
Operations Manual: K-Belt Jack



**USE FOR ANYTHING OTHER
THAN INTENDED PURPOSE
MAY RESULT IN INJURY OR
DEATH**



**USE OF A CHEATER BAR OR
IMPACT WRENCH ON THE
JACK MAY RESULT IN
INJURY OR DEATH**



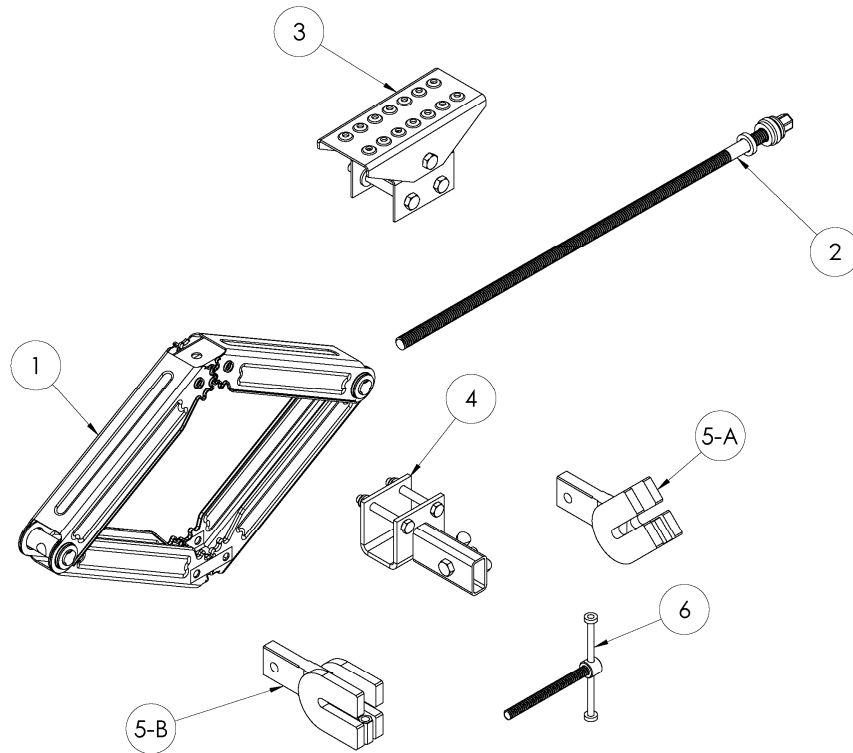
**DO NOT USE TO LIFT
WEIGHT BEYOND SAFE
WORKING LIMIT**



**ENSURE NO PART OF THE
BODY IS INSIDE THE JACK
WHEN IN USE**

Operations Manual: K-Belt Jack

Parts and Components



Number	Part Number	Description
1	K-BELT-JACK-2T	Scissor Jack Body
2		Lead Screw
3	K-REP-BL-MOD	Upper Mounting Point
4		Lower Mounting Point
5-A	K-REP-BL-AN	Angled Structure Clamp
5-B	K-REP-BL-FL	Flat Structure Clamp
6	K-REP-BL-THANDLE	T-Handle

Specifications

Safe Working Limit: 250kg
 Jack Dimensions: 675L x 312W
 Height Lowered: 145mm
 Height Raised: 640mm

Operations Manual: K-Belt Jack

Safety Considerations

Always ensure the conveyor is correctly isolated and verified before using the belt jack.

Ensure the operating instructions are read and understood prior to commencing any work.

Hand protections should always be worn and take note of the pinch points on the unit.

Inspect and report any possible damage to the belt jack prior, during or after operation.

Consult the belt manufacturer's manual and conveyor design report to ensure use of the jack does not damage the belt or exceed the jack safe working limit.

When lifting the belt ensure there is sufficient space for the desired height as lifting the belt into skirting or structure may cause damage to the belt, jack or structure.

Assembly

Select the correct clamp appropriate for the idler. The clamp can be easily fitted into the tube of the lower mounting point and secured with the provided bolt and wing nut.

The clamp type can be changed by simply removing the fasteners and replacing with the required type.



Mounting the Jack

Ensure that site specific regulations regarding working on conveyors is strictly adhered to before attempting to carry out any work on conveyor belts or conveyor systems.

Whenever possible ensure conveyor belt is empty before conveyor is isolated and locked out. Safety and accessibility should be the priority when mounting the jack.

Open the clamp and slide it onto the idler base on the side of the roller that is to be replaced. Use the T-handle to secure the jack in place.

Ensure the swivel arm is properly aligned with the belt before attempting to lift the belt.

Operations Manual: K-Belt Jack



Raising the Jack

Use the provided crank handle to extend the jack to the required height.

Secure the belt with additional structure or slings to ensure proper stability if desired.

WARNING: Do not place any part of the body in or around pinch points when the belt is not fully secured.

Lowering the Jack

Make sure to remove all restraints and securing devices on the belt.

Using the crank handle slowly lower the belt back on to the trough.

Maintenance

Ensure that the screw thread and nuts are adequately greased before use.

Before use check jack for rust, corrosion or physical damage that may impair operation. If any damage is present, tag as out of service and return to Kinder Australia for damage assessment and/or repair/re-testing.

Lifting devices should be inspected periodically by a competent person at intervals that are reasonable taking into consideration the frequency of use, usually not more than 12 months. This lifting device should be placed on the site lifting equipment register to ensure inspection records are maintained.