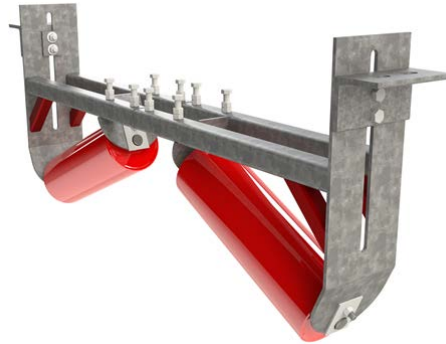


Installation Instructions: K-Commander® Guide Series INV

Kinder Australia Product:	K-Commander® Guide Series INV
Product Category:	Conveyor Belt Tracking
Issue Date:	16.11.22
Revision:	1

Overview:

The function of the K-Commander® Guide Series INV is to direct the return side of the conveyor belt so that it enters the gravity take up/bend or tail pulley squarely. Thereby reducing spillage or limiting damage to the belt and conveyor structure.

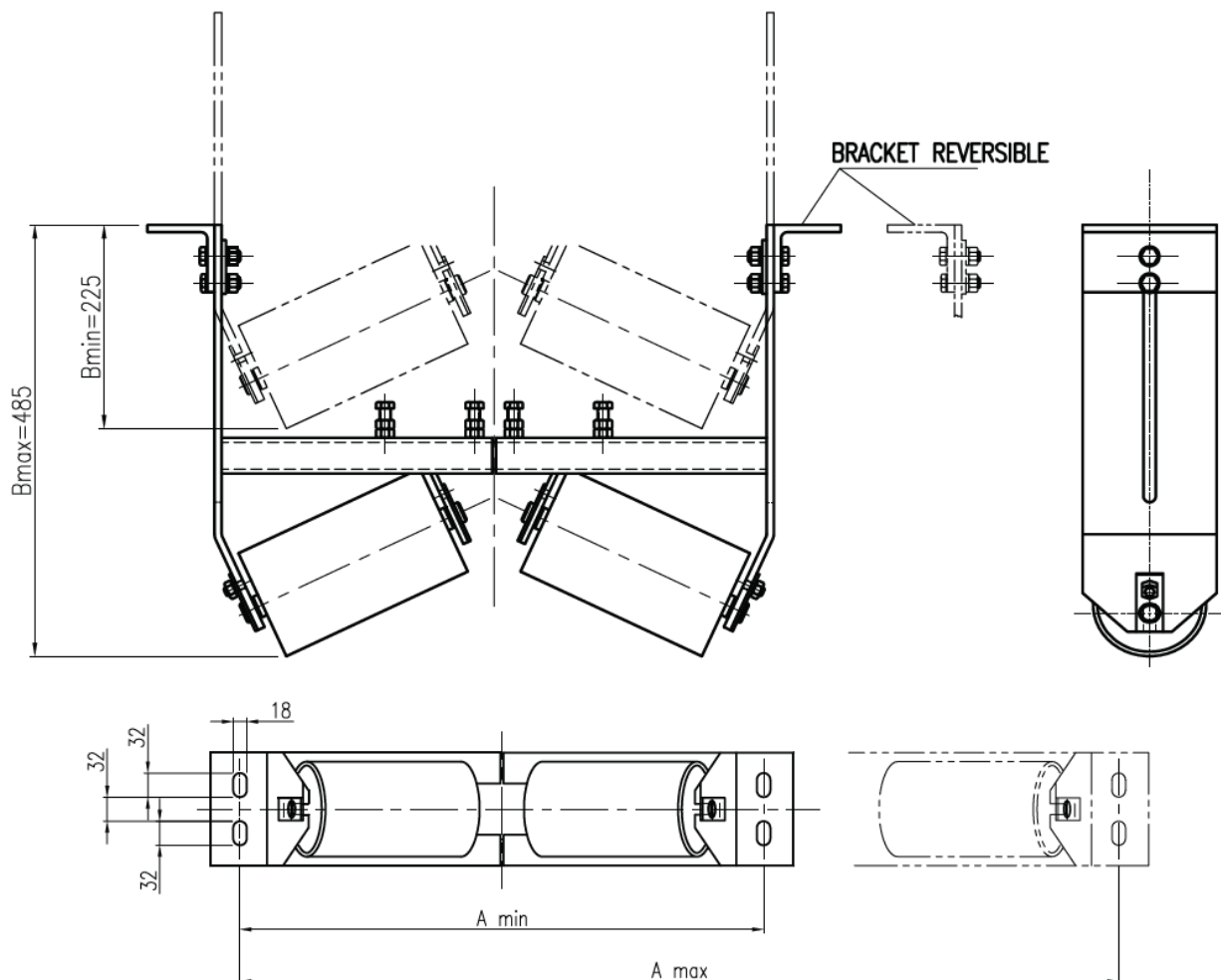


Procedure:

1. Isolate, lock and danger tag the conveyor at the main positive isolator in accordance with the appropriate occupational health and safety regulations to prevent unauthorised starting.
2. The K-Commander® Guide Series INV should be installed square to the belt and at a central position between the first and second return idler from the tail drum or gravity take up drum.
3. Adjust the K-Commander® Guide Series to correspond to the existing return idler mounting hole dimensions and lock the bolts to ensure that the central spacer is evenly located.
4. Install the unit square to the structure after marking and drilling the mounting holes in the stringers. Bolt the unit securely to the conveyor structure.
5. Loosen the side locking bolts and position down the unit evenly so that the contact area of the rollers and the belt is approximately 100mm. For severe tracking problems this contact area may be increased.
6. Lock into position and run the belt and check that the contact area is even on both rollers, if not adjusted each side so that the belt runs evenly. Ensure that the belt is not being deformed so much that it is creasing the belt, as this will cause damage to the belt ply. The belt should take on an even troughing profile.
7. The installation is now complete, remove all tools and equipment and replace guards.
8. Remove personnel danger tags. Unlock main positive isolator and close. Start belt on test or manual control.
9. Return conveyor to service and observe performance.

Installation Instructions: K-Commander® Guide Series INV

B/W	Description	Part Number	A		Weight (kg)
			Min	Max	
450 - 650	Belt range 450-650 includes: 1 Alignment Frame & 2 Steel Trough Rollers	K-TRA-KIVT450-650A	700	900	30
750 - 1050	Belt range 750-1050 includes: 1 Alignment Frame & 2 Steel Trough Rollers	K-TRA-KIVT750-1050A	900	900	36
1200 - 1500	Belt range 1200-1500 includes: 1 Alignment Frame & 2 Steel Trough Rollers	K-TRA-KIVT1200-1500A	1300	1850	48



Recommended Conveyor Belt Tracker Placement Diagram

