

Eraser SHD™ Primary Belt Cleaning System

Super Heavy-Duty Applications

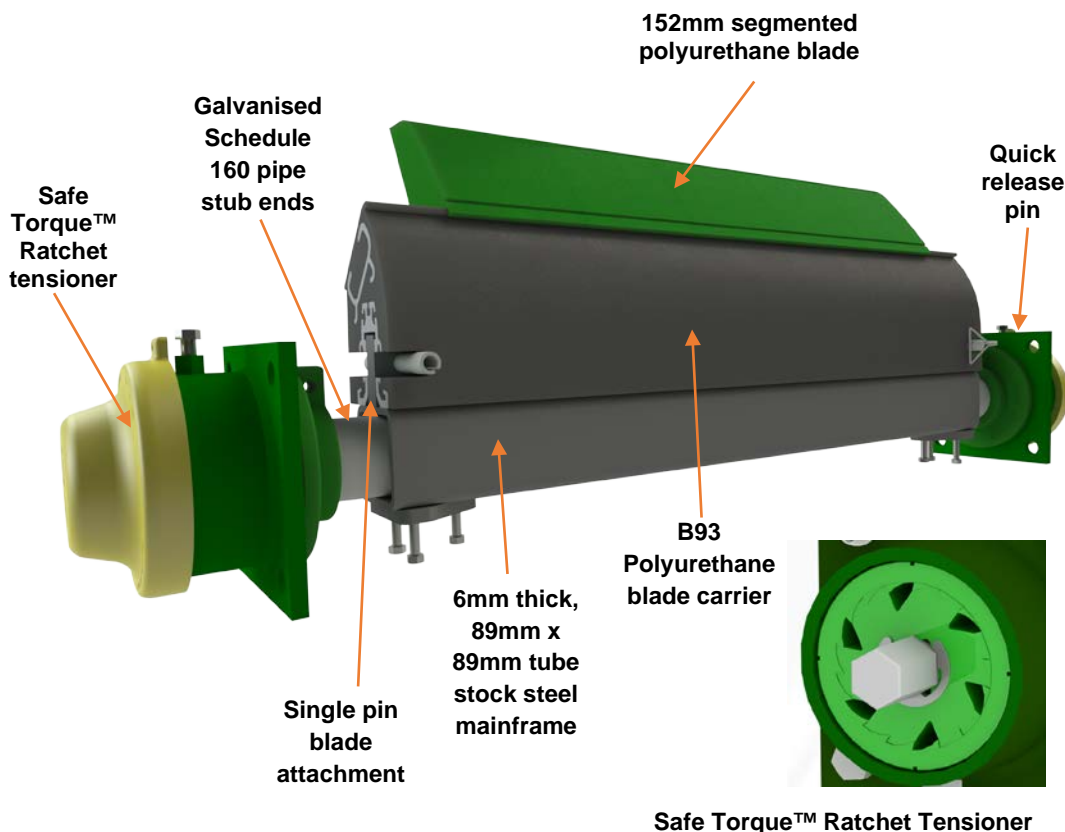
The **Eraser SHD™** system is a rugged mine duty system, designed for extremely abusive environments with a 286mm polyurethane blade. The Eraser SHD™ system comes with a single piece polyurethane blade carrier that allows easy maintenance and tip segment replacement. This blade allows for only the tip to be replaced when it becomes worn, rather than the entire blade. And as it comes in 152mm lengths, in cases of uneven wear, you can replace just the worn section.

This system uses the Super Eraser™ 6 mm thick, 89mm x 89mm tube stock steel mainframe and corrosion-resistant, galvanised Schedule 160 pipe stub ends for high rigidity and long-lasting durability.

Key Benefits

- Replaceable blade tip means quick blade change out with less downtime.
- For use on conveyors with large head pulleys, high throughputs, harsh conditions and/or fast belt speeds.
- Extremely effective cleaning performance with a 286mm Raptor blade.
- Heavy duty mainframe for reduced blade deflection and consistent blade pressure.
- The Perma-Torque™ internal central tensioner is adjustable from 40 to 183 Nm resulting in uniform cleaning pressure to the conveyor belt.
- Compact mounting footprint only protrudes 140mm from mounting structure.
- Safety yellow coloured end caps seal the Safe Torque™ ratchet from dust and water contamination.

BLADES



- N62 Ether**
Normally used for extremely wet applications, sands & fines
- R80 Ether**
Good for wet applications with any pH level
- G83 Ester**
Our standard, high abrasion-resistant all-purpose cleaning blade
- U90**
Good for dry applications with any pH level
- B93 Ester**
Our high temperature cleaning blade, up to 121°C
- FO83 Ester**
MSHA approved Front Line® flame-retardant cleaning blade
- RU83 Ester**
Flame retardant, anti-static cleaning blade

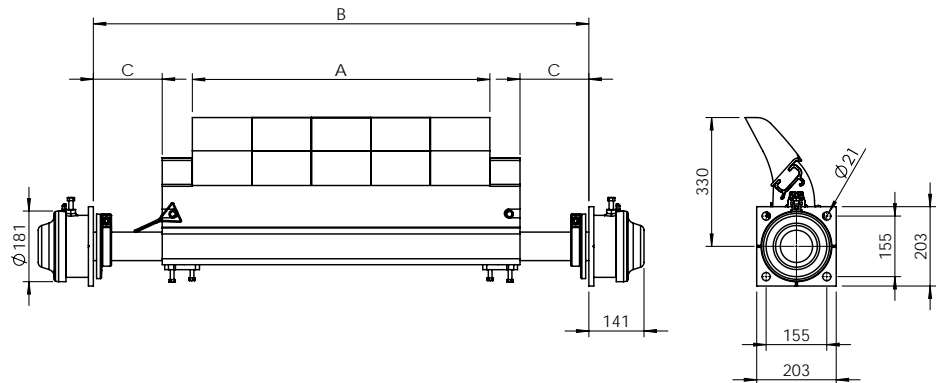
Eraser SHD™ Primary Belt Cleaning System

SPECIFICATIONS

Belt speeds up to 2.5m/s for G83 blades.

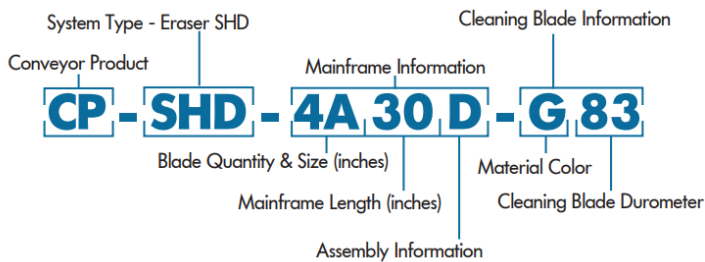
For greater belt speed up to 7m/s, contact Kinder Australia.

Pulley Diameters 610 to 1524mm. Parallel Face Pulleys only.



Part Number	A mm	Min B mm	Max B mm	Min C mm	Max C mm	Weight (kgs)
K-CLE-CP-SHD-4A30D	610	1270	1474	254	356	62
K-CLE-CP-SHD-5A36D	762	1270	1626	178	356	67
K-CLE-CP-SHD-6A42D	915	1270	1778	102	356	73
K-CLE-CP-SHD-7A48D	1067	1270	1931	7	356	78
K-CLE-CP-SHD-8A54D	1220	1385	2083	7	356	83
K-CLE-CP-SHD-9A60D	1372	1537	2236	7	356	89
K-CLE-CP-SHD-11A72D	1677	1842	2540	7	356	100
K-CLE-CP-SHD-13A242D	1982	2147	2744	7	305	110
K-CLE-CP-SHD-15A248D	2286	2451	3048	7	305	121
K-CLE-CP-SHD-17A254D	2591	2756	3353	7	305	131
K-CLE-CP-SHD-19A260D	2896	3061	3658	7	305	105

NOMENCLATURE



MOUNTING INFORMATION

